

SUPERIOR QUALITY · EXCELLENT SERVICE



DP360 Technical Parameters	
Dimensions, unpacked (W x D x H)	1066 x 700 x 630 mm
Net Weight	approx. 130 kg
Power consumption	1200 VA
Supply voltage/ frequency	100 - 240 VAC 50/60 Hz
Operating temperature range	+15°C to +40°C
Total stations	26
Oven station and temperature	1; Max temperature 75°C
Reagent heating station	4; Max temperature 38°C
Water washing station	4
Reservoir volume	480 ml ± 20 ml
Program storage capacity	≥100 programs
Slide rack capacity	30 pcs
Throughput H/E	360 slides per hour



Slide Stainer | DP360
Fully Automatic Intelligent Slide Stainer



DAKEWE
Dakewe Medical
Shenzhen, China
www.dakewemedical.com



Fully Automatic Intelligent Slide Stainer

Slide Stainer DP360 is a fully automatic intelligent stainer for routine histological and cytological Staining. It has stand-alone mode and online mode with CS500 glass coverslipper to form the integrated combo workstation. High throughput, fully automated staining process. Excellent quality control system and ready-to-use consumables and patented AAT system keeps each slide consistent.



Expertise in Quality Control Excellent Staining Effect

- **Patented AAT system**

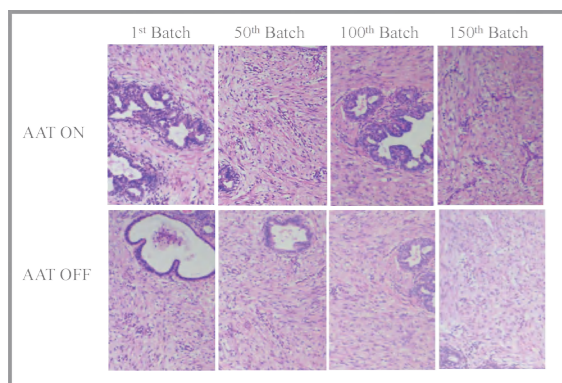
AAT technology keeps staining consistent. According to the specimen / numbers of staining rack and / or days of hematoxylin and eosin use, the soaking time will be gradually increased to achieve staining consistency. This system saves on the reagent cost.

- **Reagent management-quality control**

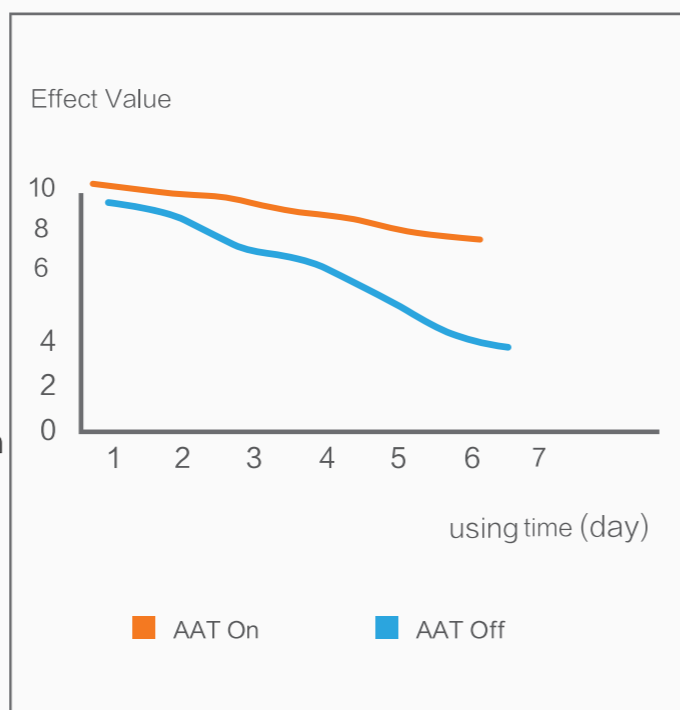
The Software controls the reagent management system. It allows the users to monitor reagent utilization and automatically generates a replacement reminder. This report enables effective traceability and management of staining quality and helps to reduce reagent costs.

- **Reduce reagent carry over and cross contamination**

The powerful robotic arm has the function of "leaching" and "shaking". The Slide Stainer can effectively reduce reagent carry over and limit cross contamination.



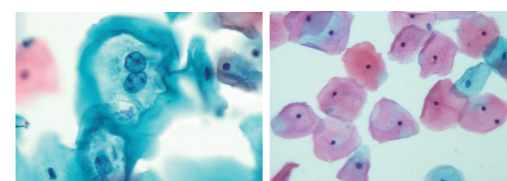
Staining consistency:
variation of Hematoxylin/ using time



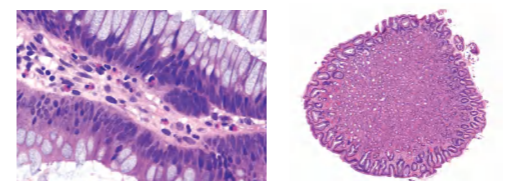
Flexibility

- **Enter up to 100 protocols**

2 Pre-programmed protocols : H/E staining, PAP Staining, different staining programs can run together.



PAP Staining



H&E Staining

- **Flexible reagent solution**

Optional exclusive ready-to-use reagent supplies for better results.

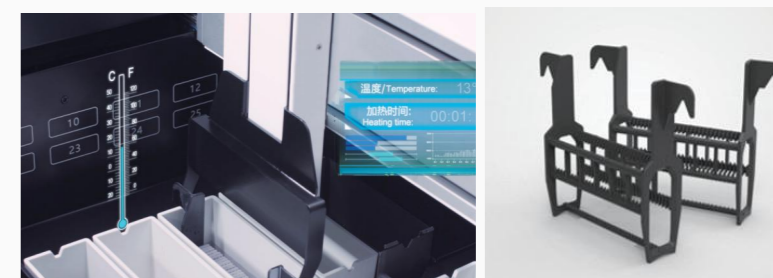


- **Reagent heating station**

The reagent can be slightly heated to eliminate the impact of climate differences and save reagent costs.

- **Hydrophobic basket**

Effectively avoid reagents from cross-contamination.





QC for Each Slide

Intelligent traceability is more accurate

- **Scientific management for reagents**

Reminder or forcible execution for reagents renewal.
Historical renewal records can be checked at any time.
Graphic reports of SOP can be exported directly.
Statistics of reagents consumption.

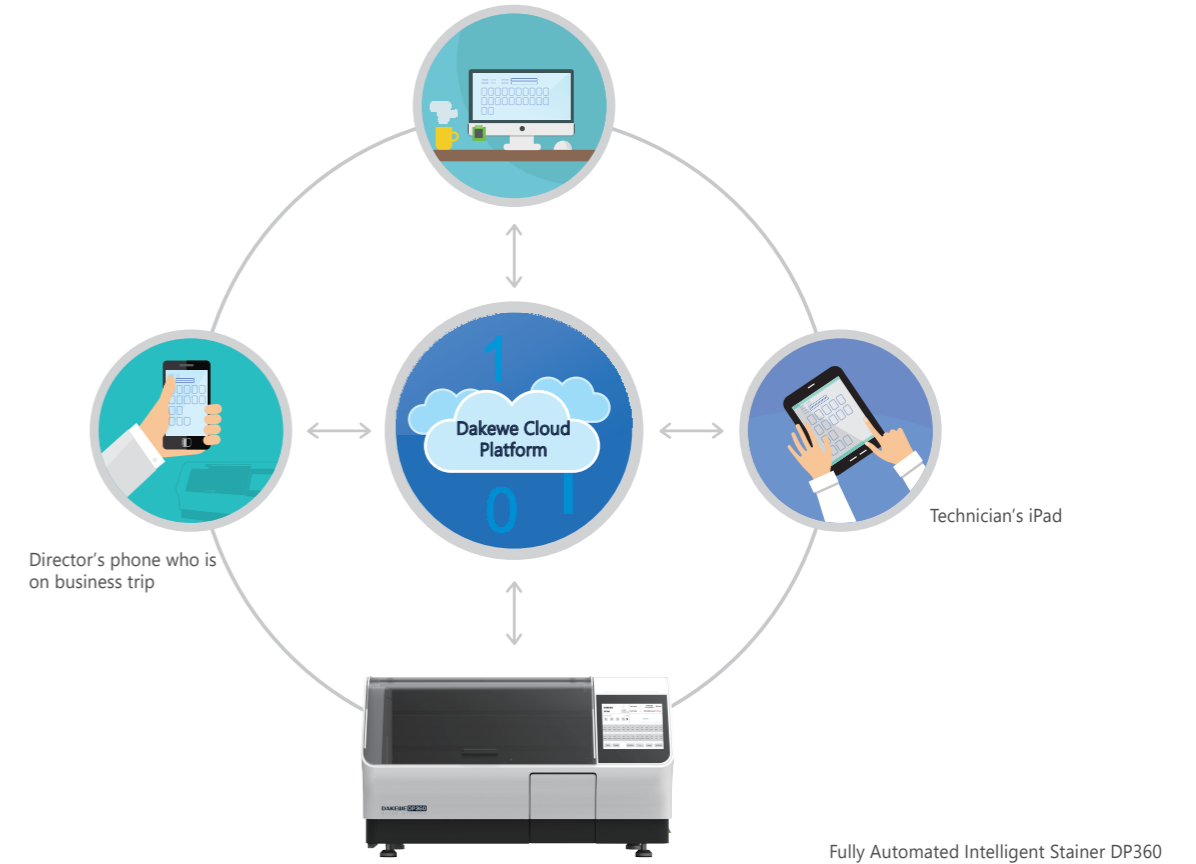
- **Human-computer interaction is intuitive**

Display indicates the status of the Stainer and coverslipper, the current reagent status and the amount of slides that have been completed.



- **Remote real-time monitoring, alarms and queries**

DAKEWE cloud remote monitoring system allows real-time monitoring of instrument status and remote warning (through webpage, email, SMS, and other ways), for effective management of equipment and enhanced tissue safety.



High Throughput High Efficiency

- **High speed robotic arm**

The robotic arm is quick and silent. Its vertical pulling speed can be as fast as 0.76 meter/second. It allows up to 11 slide racks to run at the same time. The staining time is always accurate.

- **High-throughput staining**

The innovative intelligent software algorithm is able to handle approximately 360 slides per hour (depending on the user protocols).



Safety and Ergonomic

- **Unique interaction**

25 cm (10.4 inch) color touch display, user-friendly software design, simple operation process.

- **Total safety**

The intelligent exhaust gas monitoring function ensures that fumes do not escape. The exhaust gas concentration sensor monitors in real-time to protect staff's health.

- **Various alarms**

Real-time voice, visual signals, text, and notification via application (through your smart phone, Laptops and iPad with DAKWE free download application) to provide an intelligent operating guide program.

