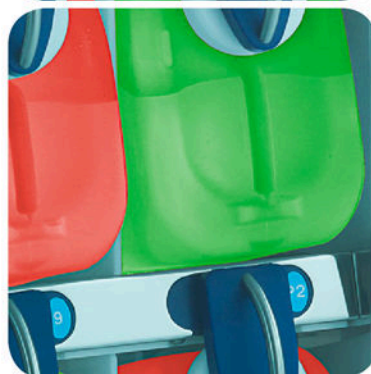
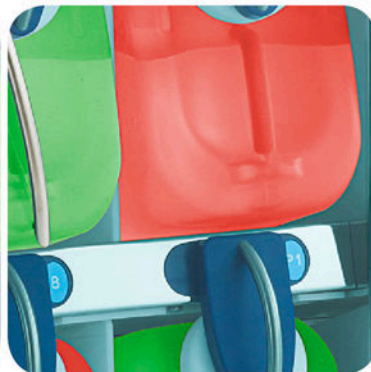
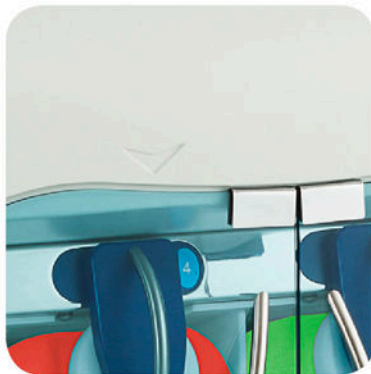


HISTOLOGY EQUIPMENT



VACUUM TISSUE
PROCESSORS

**ETP
EFTP**

PLUS



INTELSINT

ETP

ETP PLUS



Xylene Free.
All INTELSINT tissue processors can efficiently work with xylene and alcohol substitutes

Fully enclosed, "state of the art" features, safe and highly reliable, the Intelsint ETP Plus is the right answer for the day-by-day tissue processing needs of every Histology laboratory.

With a processing capacity of 450 specimens, three paraffin containers and an easy to operate HMI (Human Machine Interface) it sets itself at the top of the category.

Designed with specimens safety and operator ergonomics in mind, the ETP Plus is also capable of performing in unfavorable environments.

It's fully automated RFD (Remote Fill and Drain) feature allows the user a safe, clean and easy reagents renewal.

Simple and economic service and maintenance is one of the benefit of Intelsint ETP Plus

Code 906.003 + 906.030

EFTP

EFTP PLUS

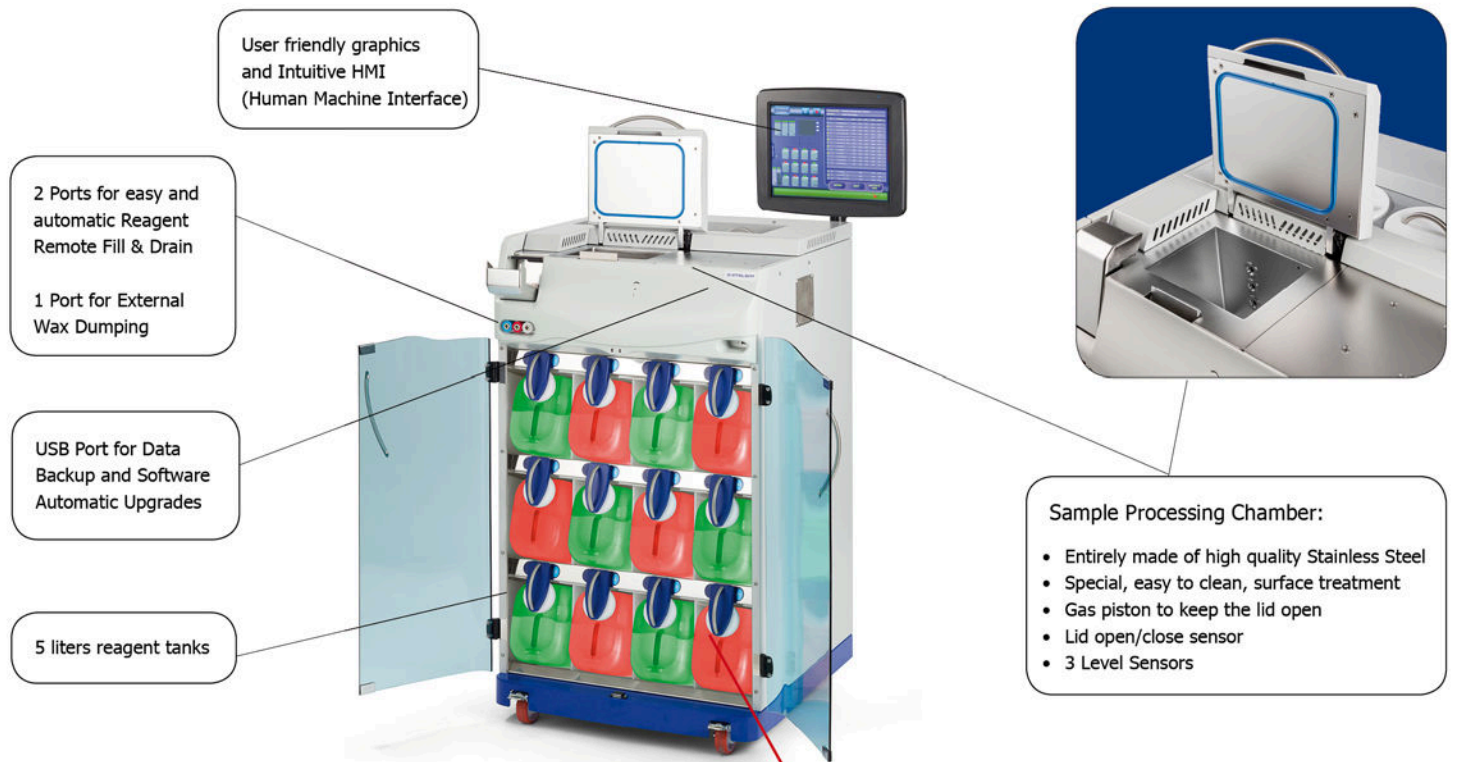
Fully enclosed, "state of the art" features, safe and highly reliable, the Intelsint EFTP Plus is the right answer for the day-by-day tissue processing needs of every Histology laboratory.

The EFTP Plus is the fastest non-microwave tissue processor today available. Up to 450 biopsies can be safely processed in 45 minutes. This result can be achieved with traditional reagents or with most of the Xylene and Ethyl alcohol substitutes available on the market.

The reagents heating is safely performed during filling into the sample processing chamber without any delay by a patented device called EHE (Enhanced Heat Exchanger). Only three reagents (plus fixation) are necessary to successfully and rapidly process biopsies. Every sample is evenly warmed at the desired temperature since the very beginning of each processing step. Any risk of overheating is avoided thanks to the special conformation and the multiple safety devices of the EHE.

Codice 906.004 + 906.030





Standard features

- ✓ **Overnight Processing**
- ✓ **Fast Processing (microwave free) (EFTP)**
- ✓ **Reagent Management System (RMS)**
- ✓ **Remote Fill & Drain**
- ✓ **450 samples capacity**
- ✓ **15" Touch Screen Operation Control**
- ✓ **3 Level Sensors**
- ✓ **Reagent Partial Load Capacity**
- ✓ **Wax Cleaning Cycle**
- ✓ **Data Backup on USB port**
- ✓ **18 Process Programs**
- ✓ **Reverse Processing Special Program**
- ✓ **Process End Time Management**
- ✓ **Fume Control Charcoal Filter**
- ✓ **Operator management with customizable level of access**
- ✓ **Operator Login with barcode reader**

New features on the model PLUS:

- Backlighted reagents tanks to facilitate the evaluation of the reagent level inside the tank
- Backligh with color change related to the status of the reagent:
 - Green color = reagent good
 - Red color = reagent need to be changed
- RFID sensors on each tank
(12 sensors per instrument) to check:
 - Tank Present/not present
 - Tank in correct position/incorrect position
 - Tank inserted correctly/not inserted correctly
 - Tank containing the correct reagent for that position (only for tanks prefilled in the factory with Intelsint tag)

Optional features

- ✓ **Backup system with external UPS**
- ✓ **Safeguard reagents management**
- ✓ **Data protection system with CPU-UPS**
- ✓ **Reagent Management System with RFID**
- ✓ **Backlighted Reagents tanks**
- ✓ **Identification of the baskets with barcode reader**
- ✓ **Connection with the L.I.S.**
- ✓ **Remote connection for service**





Process Editing

Simple
Clear
Easy
Intuitive

18 Process available

Drag & Copy Function
Copy Process Function
Controlled Field Value

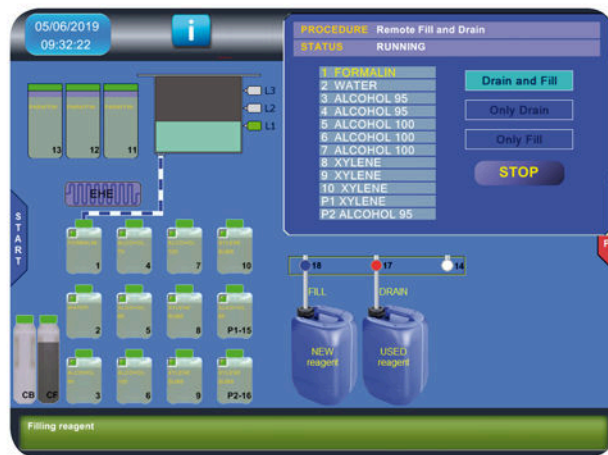
Process Start and Run

Most Used Process Function
Easy End of Process Setting

Graphic Process Controls
Multi-language
Reagent Level Check
Partial Reagent Load
Samples Baskets Check

Info Function to check 'at a glance' the most important instrument parameters

Reagent Quality Check



Remote Fill & Drain

To change the reagents easily
without removing tanks

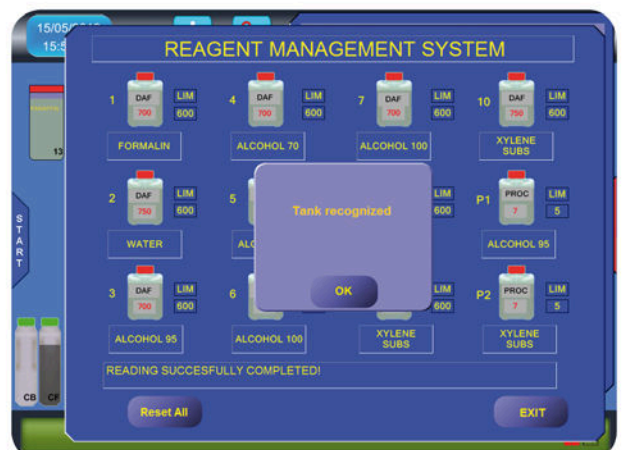
Graphic RFD Control
Reagent Quality Check
Easy and Intuitive HMI
RFD connected with RMS

Fast and Fully Automated

2 Ports for Reagents
1 Port for Paraffin

The new features of the PLUS model are strictly related to the RMS system and allow to:

- Reduce drastically the possibility to make errors during the management of the reagents.
 - Make the work of the laboratory technicians more easy and safe.
 - Increase the quality of processing
 - Reduce the risk of sample over or under processed
- Reduce the quantity of samples that need to be reprocessed (this can occur during the use of any type or model of tissue processors when the quality of the reagent is not managed correctly)



Tissue processor configuration



ETP
Vacuum Tissue Processor
360/450 samples
PLUSM
Plus module: integration with
RFID/NFC system for each reagent tank
(12 sensors)
(Code 906.003 + 906.030)



UPS1
UPS
230V -1350W for ETP
(Code: 3UP.S01)



EFTP
Fast Tissue Processor
360/450 samples
PLUSM
Plus module: integration with
RFID/NFC system for each reagent tank
(12 sensors)
(Code 906.004 + 906.030)



UPS2
UPS
230V -1980W for EFTP
(Code: 3UP.S02)



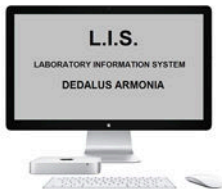
BRSW
Barcode reader software
(for basket identification)
(Code 906.060)



BRG
Barcode reader gun
(Code: 3BC.R01)



OR



ALIS
Connection with LIS system
Dedalus Armonia
(Code: 906.050)



OLIS
Connection with LIS system
other companies
(Code: 906.059)



RSSW
Remote Service software Licence
(Code: 906.061)



	ETP Plus	EFTP Plus
Technical Specification	Sample Processing Capacity	360/450
	Sample baskets	3
	Load capacity for histological samples	450
	SPC Level Sensors	3
	EHE for Fast Processing	NO YES
Protocols features	RFID Sensors	12
	Processing Programs	18
	Prefered programs, with quick start	6
	Purge programs	4
	Reverse Processing Special Program	1
Reagents	Maximum time for each step	99 hh and e 59 mm
	Start process maximum delay	15 gg max
	Process End time/date	User programmable
	Processing reagents	10 Tanks - 5 Lt.
	Process chamber washing reagents	2 Tanks - 5 Lt.
	Paraffin Containers	3 of 5 Lt.
	Reagents Temperature Range	20 - 65 (°C)
	Paraffin Temperature Range	55 - 65 (°C)
	Processing pressures	600/1200 Hpa
	RMS - Reagent Management System	YES
	RFD - Remote Fill & Drain	YES
	EWD - External Wax Dumping	YES
	PWD - Protected Wax Dumping	YES
	Vapor treatment	Charcoal filter
	Safe reagents (optional with External UPS)	YES
Features HW & SW	Touch screen monitor	Colors LCD TFT - 15 "
	Available software languages	12
	USB Ports (Data transfer, backup, Printer, UPS)	5
	Network ports (Ethernet)	2
	Remote Alarm Port	YES
Electrical data	External UPS (Optional)	1350 W 1820 W
	Rating	115-230 Vac - 50/60 Hz
Env. conditions	Installed power	1000 W 1500 W
	Temperature / Umidity	15 - 30 °C / 70% max
Approvals	Maximum elevation	2500 mls
	CE, CTUVus	UL 61010-1:2004 R10.08, IEC 61010-2-010:2003, IEC 61010-2-101:2002, CAN/CSA-C22.2 NO. 61010-1-04+GI1_610-2-010-04_610.2.101-04
Dimensions and weights	Dimensions (LxDxH)	680 x 700 x 1500 mm (with monitor)
	Weight	198 Kg 226 Kg



INTELSINT Srl

Via Rivoli 122 - 10090 Villarbasse (Turin) - Italy

Phone: +39 011 9528015

Email: info@intelsint.com

www.intelsint.it - www.intelsint.com

Agent / Dealer :

