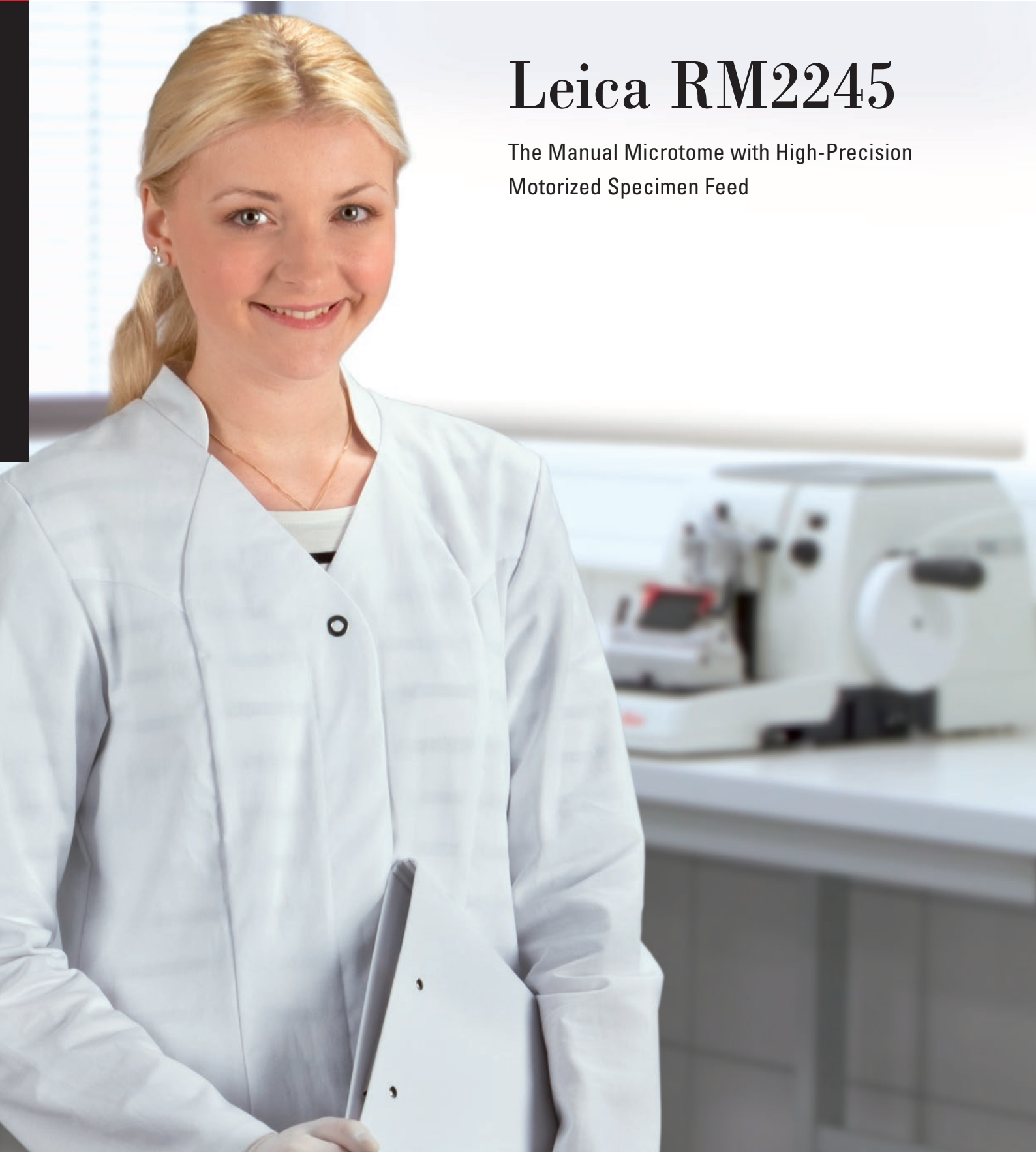


The Pathology Company



Leica RM2245

The Manual Microtome with High-Precision
Motorized Specimen Feed



The Leica RM2245 – Efficiency Goes Hand in Hand with Comfort

The Leica RM2245 semi-motorized rotary microtome represents the perfect combination of economic efficiency and user comfort. It is the instrument of choice for clinical histology and histopathology applications, as well as for research applications.

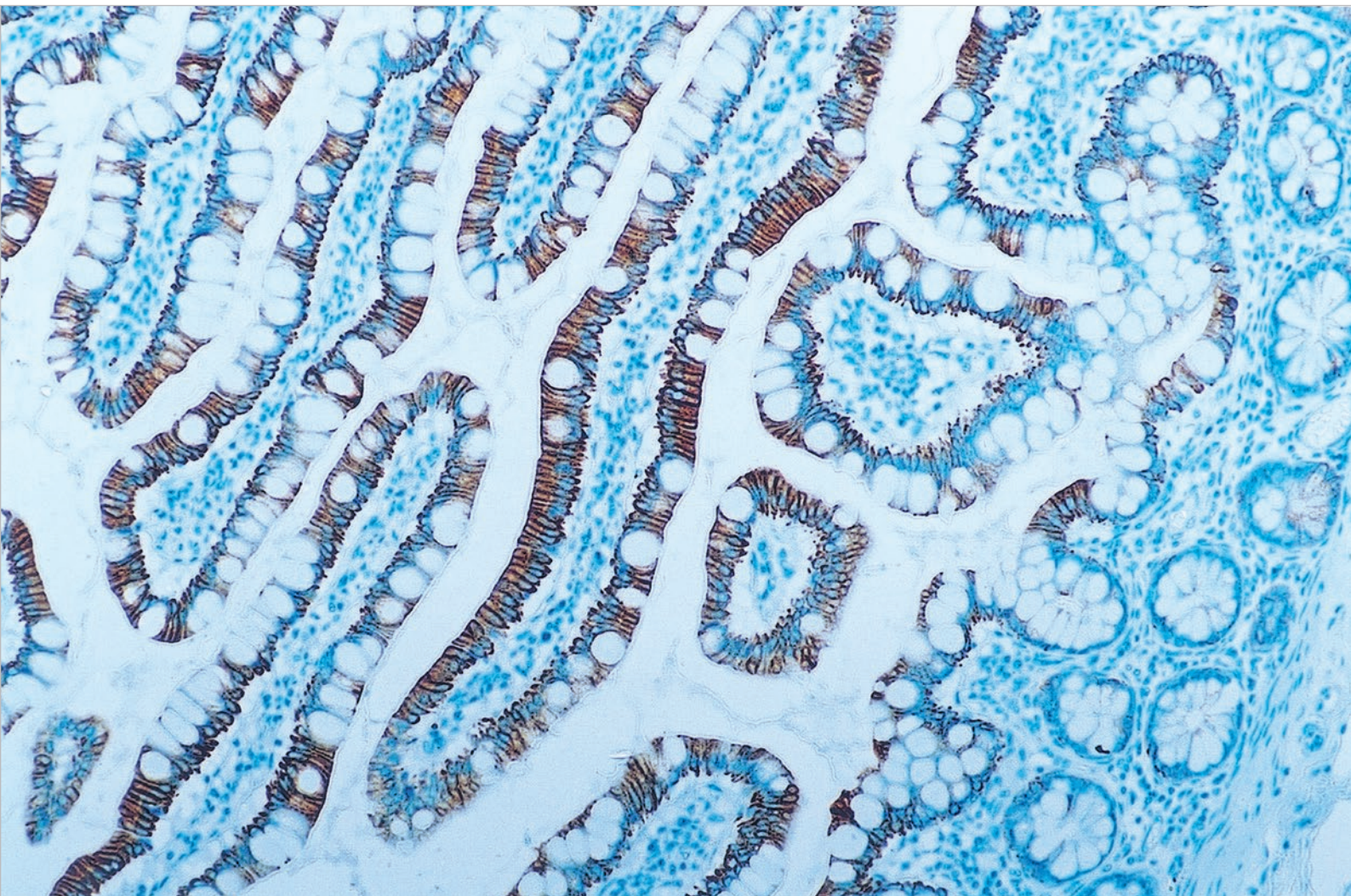
The Leica RM2245 is designed to meet the many requirements of modern laboratories. This task is fulfilled without compromise by combining proven technology and exemplary safety standards with functionality and ergonomic design.

Manual sectioning is enhanced by the high-precision motorized specimen feed, which results in efficient operation with

maximum section reproducibility. Operator fatigue is reduced through the use of the patented spring system, which eliminates the need for a heavy counter balance weight in the handwheel. Enhanced user comfort results in maximum workplace efficiency and high specimen throughput.

With the Leica RM2245 there is a choice between the conventional manual sectioning method of full handwheel rotation and the “rocking mode.” In rocking mode, the handwheel is only turned back and forth over a short distance. Every change in rotation direction is automatically translated into a specimen feed or retraction movement.





The Useful Details Show a Great Design Concept

Comfortable operation

All functions are controlled via a compact, space-saving control panel with areas in contrasting colors and touch-sensitive buttons that allow 'blind operation.' Panel inclination is adjustable, and the panel can be positioned either on the left or right side of the instrument.



Safety during sectioning

Safety is ensured by the integrated, red finger protection guard of the knife holder E that uniquely shields the blade edge. When used correctly the integrated finger protection guard rules out potential injuries.



Ergonomics and user safety

The smooth-running safety hand-wheel has an ergonomically shaped handle. A hand-wheel locking device for one-thumb operation locks the specimen head in the uppermost position, which is ideal for changing the specimen and/or blade. A second locking mechanism on the microtome base allows locking the object head in any position.



Spacious, magnetized section waste tray

The spacious section waste tray reliably collects sectioning debris. It is safely held in position by magnets, yet is easily removable for emptying and cleaning.

Unobstructed work area and stability

To provide improved access to the cutting area, several clamping levers that are not routinely used have been replaced by hidden clamping devices without compromising standard setting options. Maximum rigidity and stability are provided by the optimized microtome base plate.

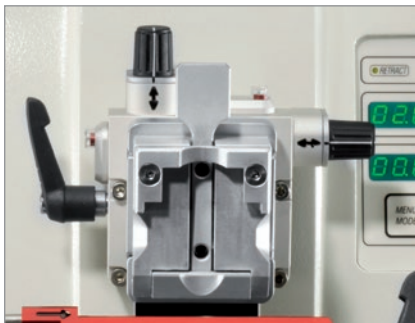
Easy to clean

Due to the rounded shape of the Leica RM2245 instrument's one piece housing, section waste is easily removed. The integrated slot cover prevents debris from entering the internal mechanisms of the microtome.



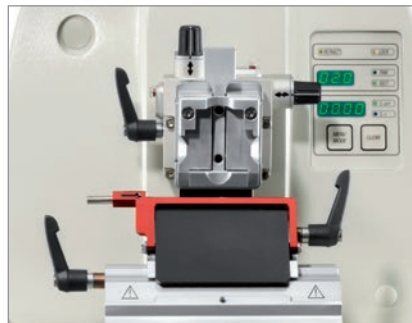
Well thought-out and proven

- **The Leica-Patented Force Compensation System:** for extremely smooth manual handwheel operation.
- **The Precision Micrometer Feed System:** from 0.5 μm to 100 μm in sectioning mode and 1 μm to 600 μm in trimming mode via stepper motor.
- **The Leica Control Panel Concept:** separate and intuitive control panel for instrument settings and communication display integrated in the instrument housing at eye level.
- **Accessories:** a wide range of blade or knife holders and specimen holders is available for a variety of applications.



Precision specimen orientation with clear zero reference point

This orientation mechanism sets new standards of precision and is very easy to operate. An important detail: Calibrated controls make it easy to adjust a specimen to an exact zero position indicated by red pins or a measurable variable on the X/Y axis for re-cuts.



Lateral knife holder adjustment

The entire width of the microtome blade can be used without having to release the blade clamping mechanism. Using the entire knife edge saves costs, especially in laboratories with high specimen throughput. Three predefined stop positions (left, center, right) correspond to the width of a standard histology cassette.



Cool storage of specimen blocks

A cooling plate with thermo element can be used for cold storage of specimen blocks either on top or on either side of the microtome.

TECHNICAL SPECIFICATIONS

Section thickness

Setting range	0.5 – 100 µm
Setting values	from 0.5 – 5 µm in 0.5 µm increments
	from 5 – 20 µm in 1 µm increments
	from 20 – 60 µm in 5 µm increments
	from 60 – 100 µm in 10 µm increments

Trimming section

thickness setting range 1 – 600 µm

Object feed 28 mm ± 1 mm, feed motion via step motor

Vertical specimen stroke 70 mm

Sectioning modes 2 manual modes (conventional full handwheel rotation and rocking mode)

Specimen retraction 5 – 100 µm in 5 µm increments, can be turned off

A wide range of accessories is available upon request.
Technical specifications are subject to change without notice.
Certifications: CE, c-CSA-us

Electric coarse feed 300 µm/s and 900 µm/s

Maximum specimen size (L x H x W) 50 x 60 x 40 mm

Specimen orientation horizontal: 8°, vertical: 8°

Nominal supply voltages 100/120/230/240 V AC ± 10%

Nominal frequency 50/60 Hz

Power draw 70 VA

Dimensions basic instrument

Width (incl. handwheel) 413 mm

Depth (incl. waste tray) 618 mm

Height (with storage area on cover) 305 mm

Weight (without accessories): approx. 37 kg (87 lbs)

Dimensions control panel

W x D x H 94 x 164 x 50 mm

Weight approx. 0.450 kg (1lb)

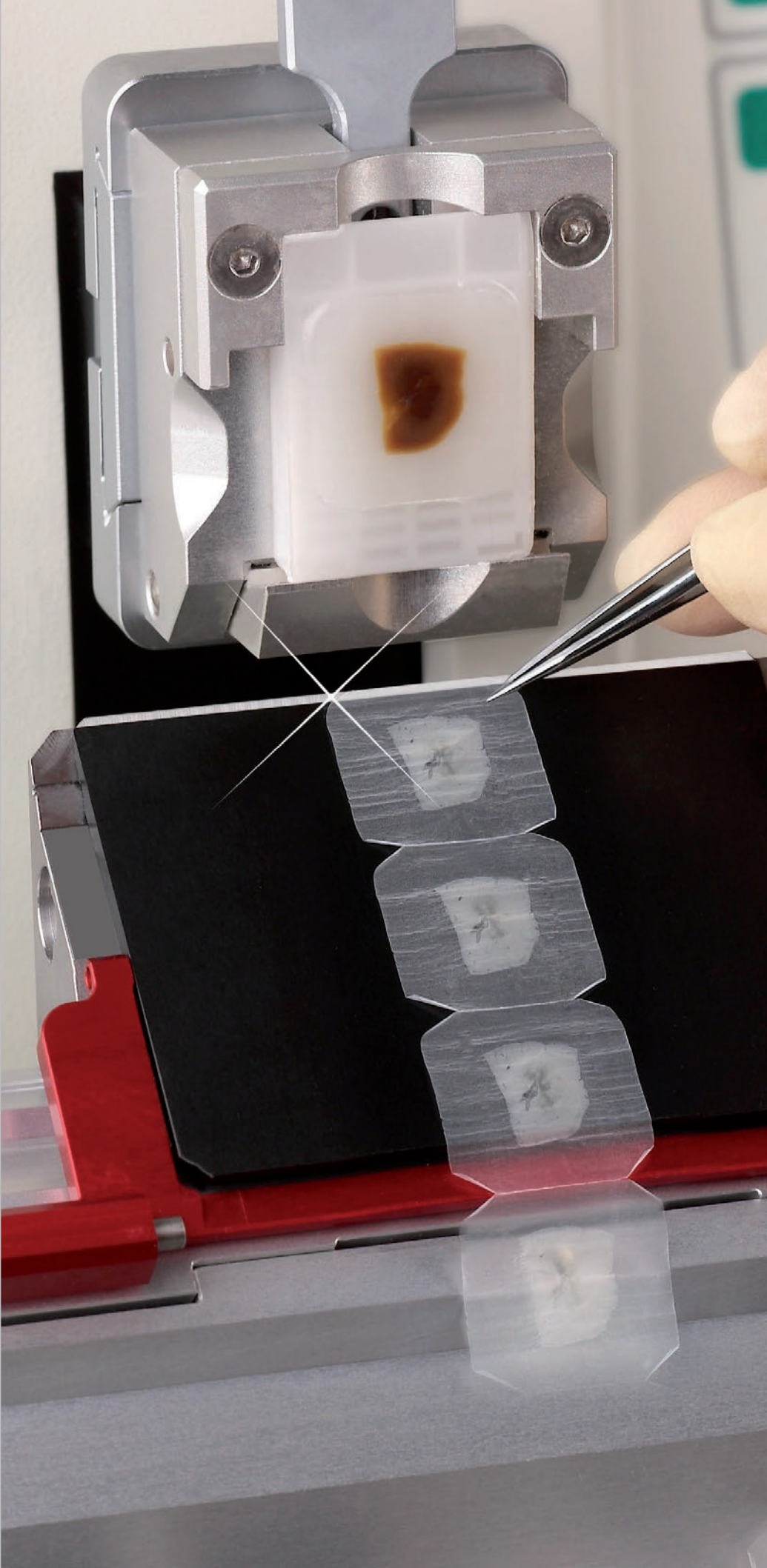
The Leica RM2245 features at a glance

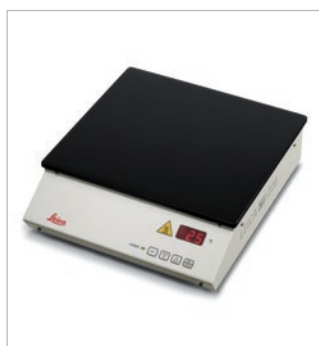
- Precision specimen orientation with zero point reference
- Compact, ergonomic overall design
- Section thickness totalizer and section counter
- Easy alternation between trimming and sectioning function
- Two motorized forward and backward specimen coarse feed speeds
- Programmable specimen retraction
- Low-maintenance cross roller bearings
- Knife holder concept for disposable blades, with finger guard in contrasting color
- Precise knife holder lateral movement
- User safety integrated into overall design
- Smooth-running handwheel with integrated quick-lock mechanism
- Ergonomically optimized handwheel handle
- Communication display integrated in instrument housing
- Enclosed micrometer mechanism
- Spacious magnetized section waste tray
- Intuitive control panel
- Wide range of accessories

Consistent sharpness and durability for quality sections

To help you cut the best possible sections, Leica Biosystems has a broad range of blades and knives for microtomes and cryostats. This range consists of both high and low profile disposable microtome blades to provide precision cutting for all tissue types, including difficult tissue types such as uterus.

Whether for dense or soft tissue, frozen or routine sectioning, biopsies or large tissue samples, Leica Biosystems has a range of blades to meet your sectioning needs.





TOTAL PARAFFIN SECTIONING SOLUTIONS

Leica Surgipath Microtome Blades

Achieve quality sections from our broad range of finely-engineered microtome blades.

Leica Surgipath Slides

With many color and adhesive options you're sure to find the ideal slide for your application.

Leica HI1210 Water Bath for Paraffin Sections

A flattening bath for paraffin sections and a water bath maintaining specimens and solutions at required temperatures for IHC applications.

Leica HI1220 Flattening Table for Paraffin Sections

A flattening table with a large jet black aluminum work surface to provide high thermal conductivity rates and outstanding resistance to mechanical manipulations.

LEICA BIOSYSTEMS

Leica Biosystems is a global leader in workflow solutions and automation, striving to advance cancer diagnostics to improve patients' lives. Leica Biosystems provides anatomic pathology laboratories and researchers a comprehensive product range for each step in the pathology process, from sample preparation and staining to imaging and reporting. Our easy-to-use and consistently reliable offerings help improve workflow efficiency and diagnostic confidence. The company is represented in over 100 countries and is headquartered in Nussloch, Germany.

Leica Biosystems – an international company with a strong network of worldwide customer service.

North America Sales and Customer Support

North America	800 248 0123
---------------	--------------

Asia/Pacific Sales and Customer Support

Australia	1800 625 286
China	+85 2 2564 6699
Japan	+81 3 5421 2804
South Korea	+82 2 3416 4500
New Zealand	0800 400 589
Singapore	+65 6779 7823

Europe Sales and Customer Support

For detailed contact information about European sales offices or distributors please visit our website.



Leica Biosystems brings together products, quality and support. Offering a complete solution that helps you advance workflows, enhance diagnostic clarity and deliver what really matters – better patient care.